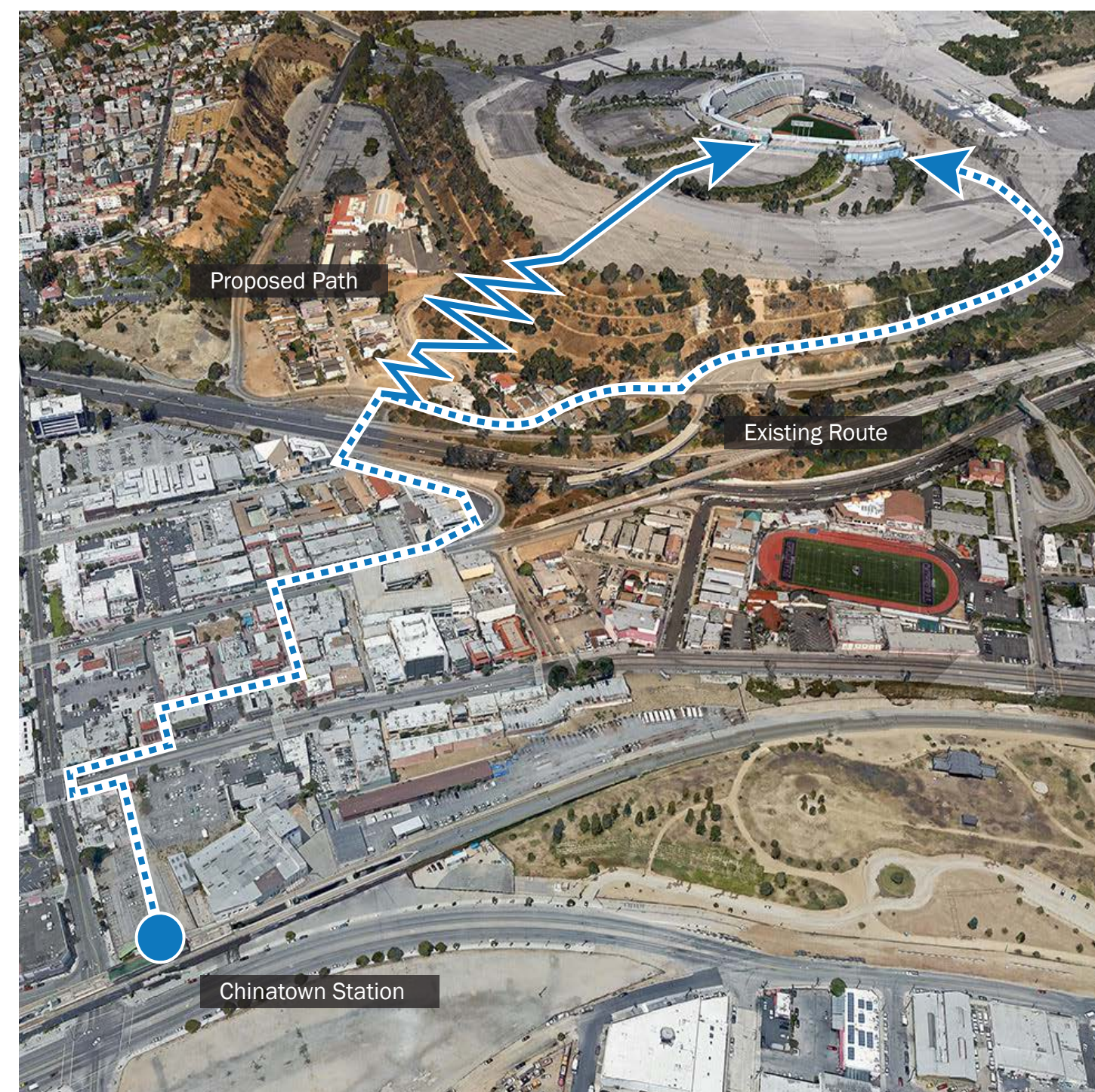
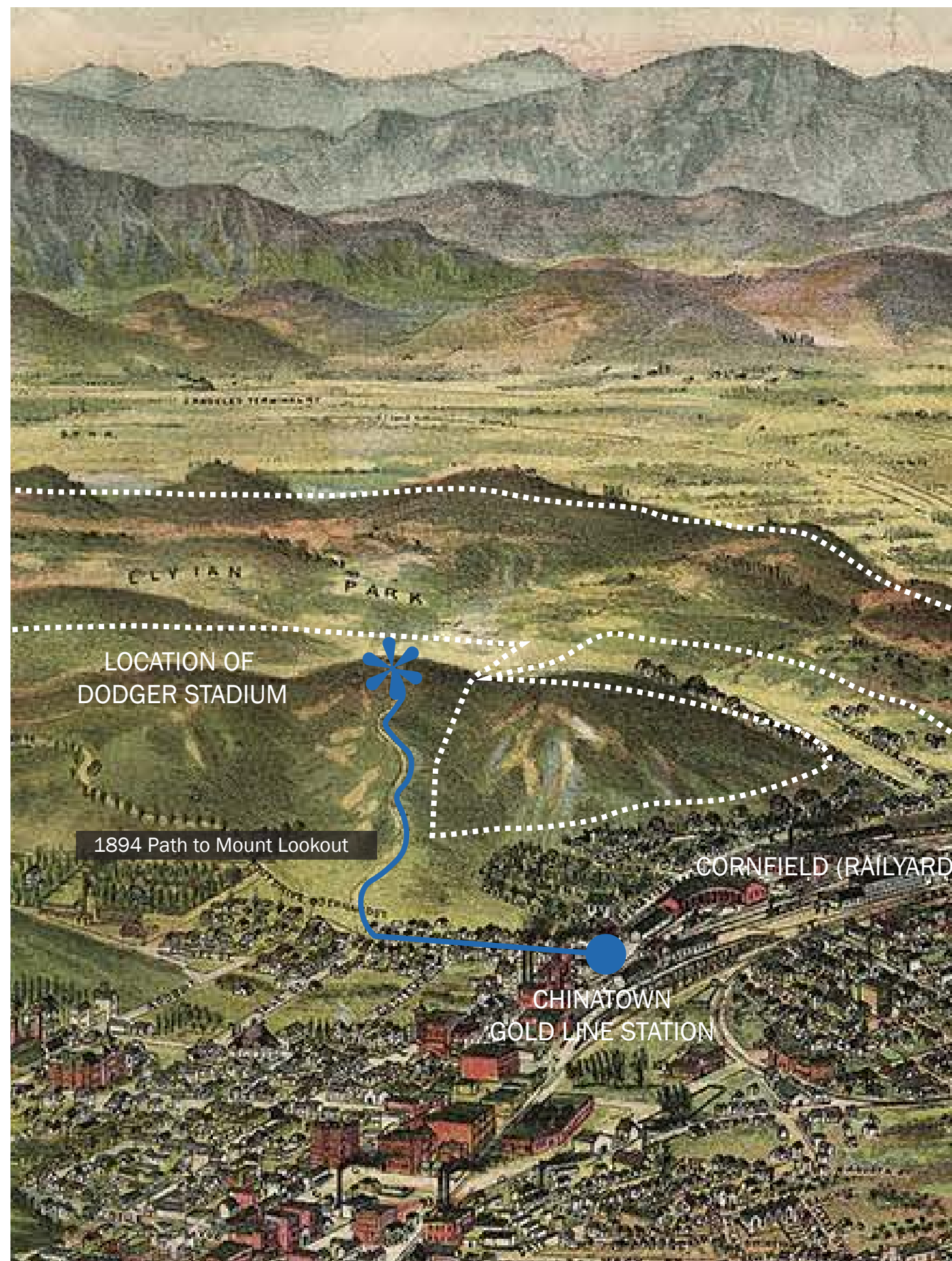


# A New Pedestrian-Only Gate to Dodger Stadium

Dodger Stadium is only an 18 minute walk away from the Metro Gold Line Chinatown Station. We propose painting a path that leads visitors from the station through old chinatown across the I-110 on existing bridge and up a new pedestrian-only path to the stadium. This path would mimic the path to Mount Lookout,

as seen on the 1894 Birdseye Drawing of Los Angeles featuring on the backside of this leaflet. The Dodgers already own most of the land so it's really just a matter of minor grading and setting the new path. Retail could potentially be added to the path providing Dodger fans with amenities on their journey up the hill.





# DodgerWalk



## historic mount lookout path



**“Imposing Mount Lookout rises above Sonoratown in this circa 1892 photograph. Courtesy of the Photo Collection - Los Angeles Public Library.” from <https://www.kcet.org/shows/lost-la/the-view-from-dodger-stadium-in-1877>**



proposed pedestrian only entrance to dodger stadium at the corner of lilac terrace and lookout drive. this route mimics the historic mount lookout trail and offers spectacular views.



— improved path on dodgers property

- - - - - environmental graphics wayfinding path along public right of way